

Dementia Support Australia

Funded by the Australian Government
A service led by HammondCare

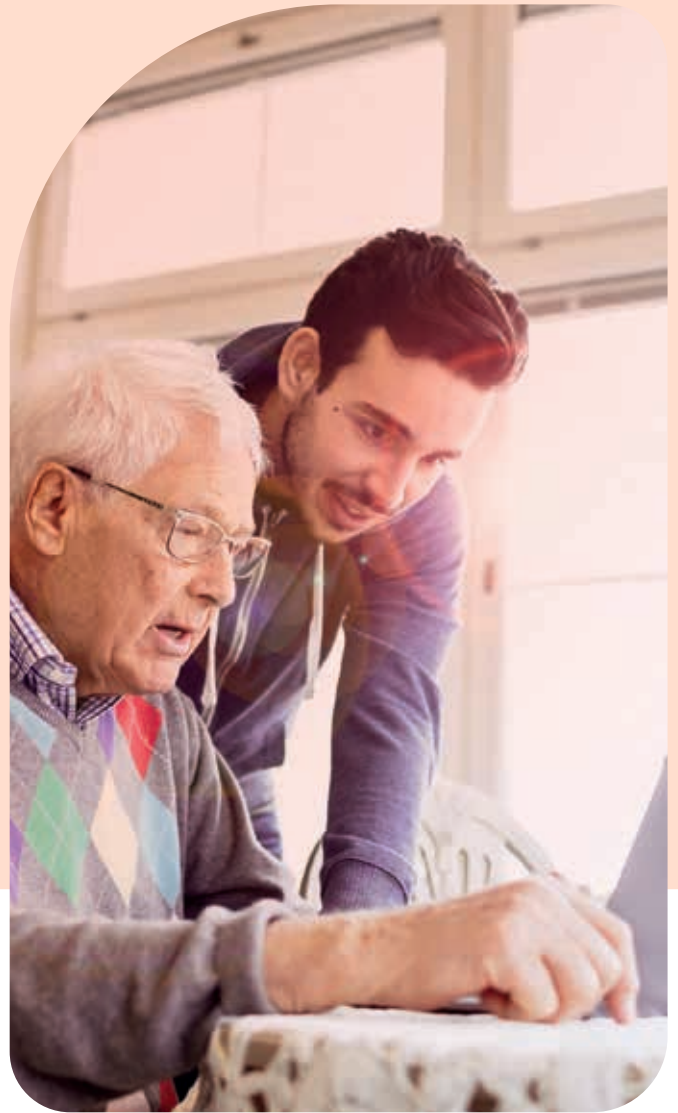
**Need specialist
behaviour support
fast?**

**Our Severe Behaviour
Response Team (SBRT)
can help**

What is the Severe Behaviour Response Team (SBRT)?

If someone living with dementia that you provide care for is a risk to themselves or others, the Severe Behaviour Response Team (SBRT) is here to help. When severe behaviours or psychological symptoms of dementia occur and you need support fast, we can have experienced consultants out to you within 48 hours anywhere in Australia.

Our mobile dementia specialists work closely with the person living with dementia, their carers, aged care staff and other specialists.



Together, we'll create and implement a tailored approach to help the person you care for. Once we've put strategies in place, we'll check in regularly along the way to provide ongoing support and advice for as long as you need. We know that this can take time – and things can change quickly so you can always access 24 hours support through our helpline.

SBRT is for people who are living with dementia and reside in a Commonwealth funded approved residential care home or a multi-purpose or flexibly funded service, and are experiencing the impact of severe behaviours as a result of their dementia.

What services are included?

SBRT aims to reduce the impact of behaviours, and improve the wellbeing of people living with dementia in residential care, by supporting them, their carers and staff.

We do this through:

- 24/7 phone support.
- Fast assessment of the person living with dementia and their environment (in-person or over the phone).
- Involving the care/support network to understand the person living with dementia including their needs, background and experiences.
- Providing strategies and advice tailored to the individual.
- Information tailored to care plans, which can inform your behaviour support plans.
- Implementation, guidance and support.
- Modelling strategies and recommendations to increase staff knowledge.
- Where required we may be able to provide extra staffing support and brokerage to trial new interventions.
- Access to current guidelines and research.
- Referrals to other DSA services.

How to get started

SBRT is a free nationwide service funded by the Australian Government. It works across residential care settings where there is risk to the person living with dementia or their care network. To access the program, get in touch with us via email, phone, our website referral form, or chat with us on our website.



Contact us 24-hours a day, 365 days a year or chat with us now on our website



1800 699 799



dementia.com.au