

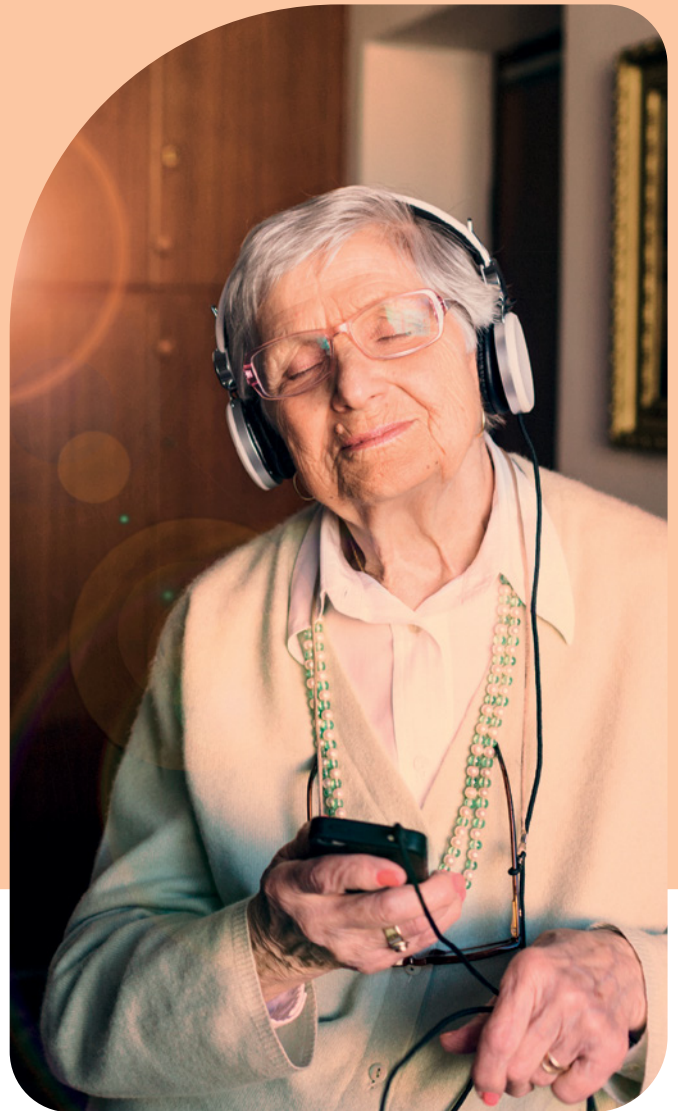
## Need support for engagement strategies for your residents?

### Our Dementia Engagement Modelling Program (DEMP) can help

#### What is the Dementia Engagement Modelling Program (DEMP)?

Isolation and lack of engagement can impact the wellbeing of people living with dementia, especially those in residential care.

DEMP can provide support to your care home and to those people living with dementia who have become isolated, frustrated or fearful, or who are at risk of developing changed behaviours and psychological symptoms of dementia.



From assessment, advice, and modelling to provision of specialised resources and building staff capacity on the ground, we're here to support you.

Together, we can develop tailored strategies that increase engagement and improve the wellbeing of people living with dementia in your care.

#### Personalised support – in a package

Our DEMP support packages can help build tailored engagement kits for meaningful engagement. Support packs include resources to help capture the person's life story and identify areas of interest and activities for their kit.

Our packs are aimed at supporting people who are living with dementia or suspected of having dementia. They are also suitable for people who are at risk of developing changes in behaviour, or who are experiencing mild behaviours and psychological symptoms of dementia.

### Build your own engagement kit

The pack includes:

- Templates.
- Help sheets.
- Access to suppliers.
- Links to purchase items.

Engagement kit activities can include:

- Aquapaints.
- Child representations (dolls).
- Music engagement.
- Simulated pets.

### How to get started

Delivered as part of the Australian Government funded programs through Dementia Support Australia, DEMP is free for care home providers.

We offer care home visits, online support, website links to engagement packages and resources to help you develop your own programs.

### Find out more

Dementia doesn't follow a set schedule – and neither do we. To find out more about our program, visit our website.



**Contact us 24-hours a day, 365 days a year or chat with us now on our website**



1800 699 799



[dementia.com.au](https://www.dementia.com.au)